



# MULTISPECTRAL TECHNOLOGY :

Take profit of our off-the-shelf Multispectral Cameras or Build your own ones

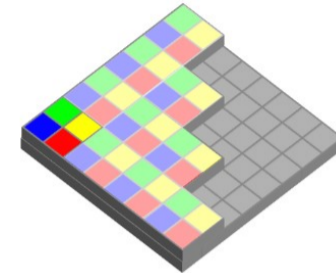
## The COLOR SHADES technology involves :

- ✓ Pixelated multispectral filters manufacturing
- ✓ Hybridization of the filters onto imagers
- ✓ Macropixel design (any possibility)
- ✓ VIS, NIR and SWIR domains

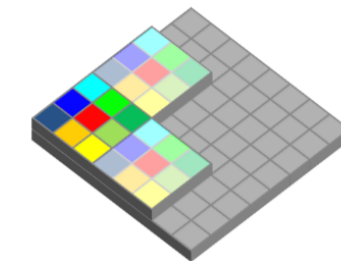
## An unmatched flexibility :

- ✓ Compatible with any CMOS imager
- ✓ High sensitivity
- ✓ Large angular acceptance
- ✓ Full Customization available
- ✓ From low to high volume productions
- ✓ No MOQ ordering

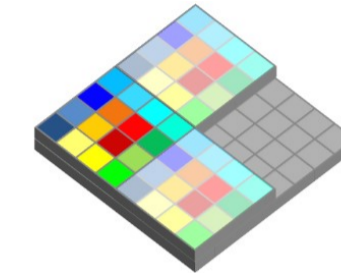
SNAP SHOT



4 interleaved images  
Resolution :  $N/2 \times M/2$

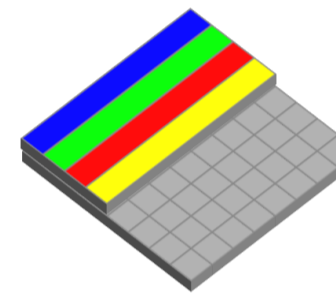


9 interleaved images  
Resolution :  $N/3 \times M/3$



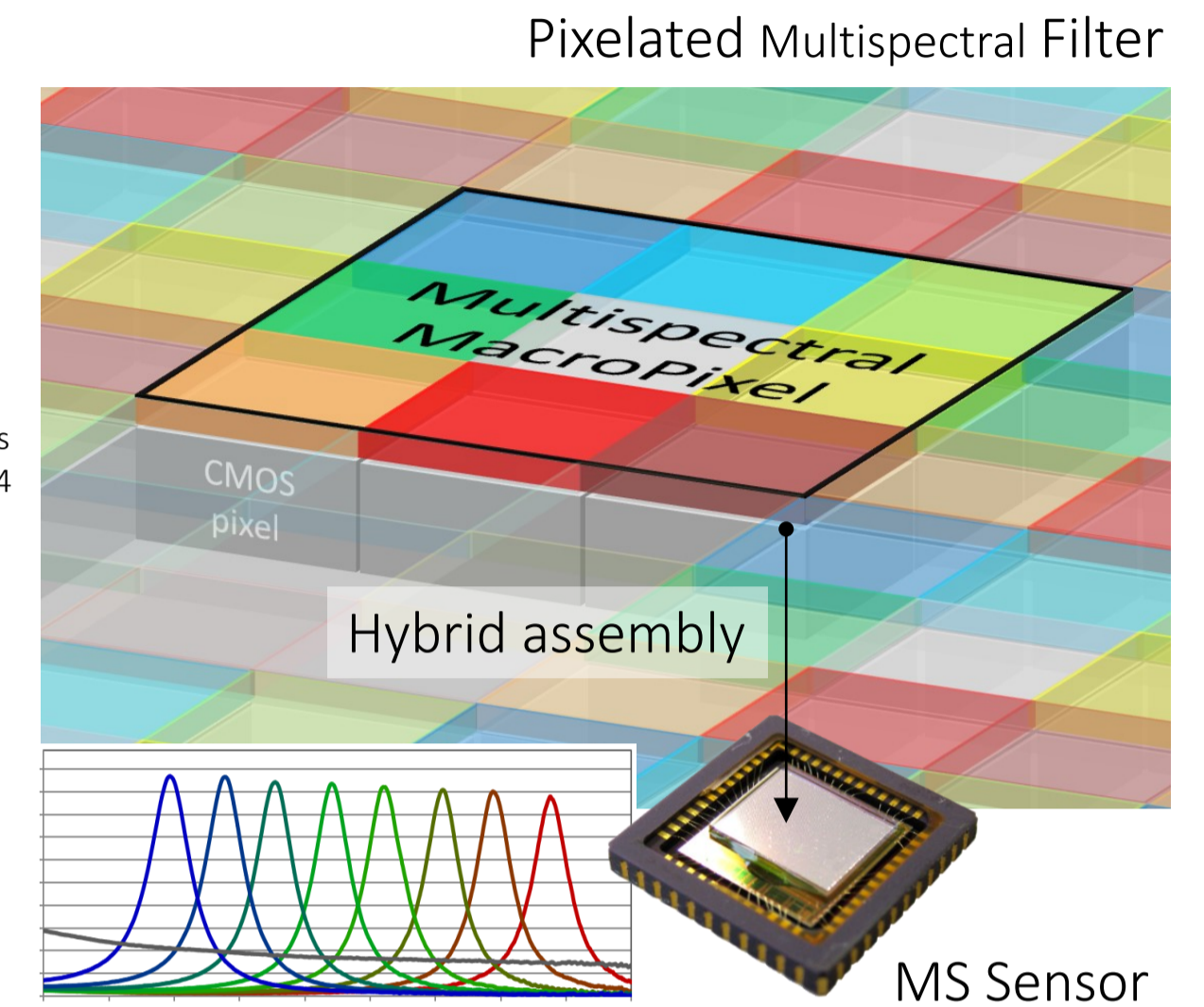
16 interleaved images  
Resolution :  $N/4 \times M/4$

PUSH BROOM



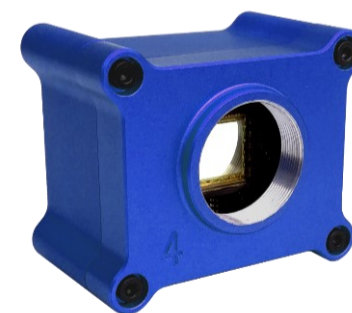
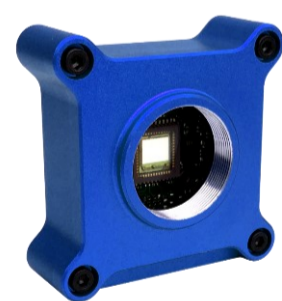
Ex: 4 interleaved spectral lines  
for push broom camera system

Any other configuration possible...



## OFF-THE-SHELF

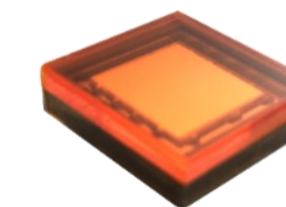
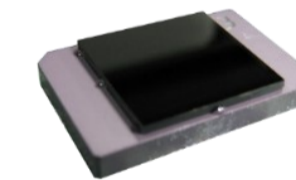
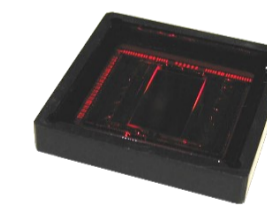
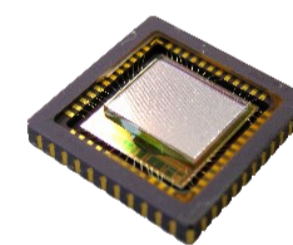
Multispectral Cameras: CMS & CMS4 Series



CMS	CMS4
1.3 Mpx	4.2 Mpx
USB3.0/GigE	USB3.0
10 bits	10 bits
8 spectral bands + 1 B&W	
3 spectral ranges : 430-700nm 550-830nm 650-930nm	

## CUSTOM

Multispectral Filters - Sensors - Cameras



Examples :

CMOS : RUBY (Teledyne e2v) - 1.3Mpx  
Macro-pixel size : 4x4  
Spectral range : VIS  
Application : Industrial vision (Sorting)

CMOS : ONYX (Teledyne e2v) - 2Mpx  
Macro-pixel size : 3x3  
Spectral range : NIR  
Application : Defense (Confidential)

CMOS: Viimagic 9225 (Viimagic) - 2Mpx  
Macro-pixel size : 6x6  
Spectral range : VIS-NIR  
Application : Surveillance (Face recognition)

CMOS: CMV4000 (AMS) - 4Mpx  
Macro-pixel size : 4x4  
Spectral range : VIS-NIR  
Application : Space (Earth observation)